

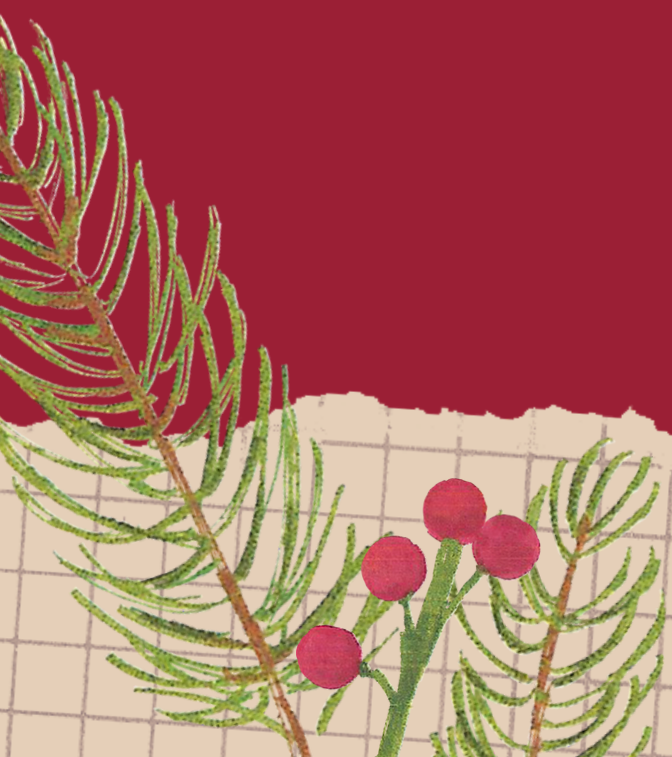
FCE CHRISTMAS SPEAKING

*Merry
Christmas*



What is it?

Long pieces of thin, shiny
material used as
decoration.





What is it?

A plant often used as a Christmas decoration, and it is traditional to kiss someone under it.



What is it?

A drink made from milk,
sugar, and eggs, often
mixed with alcohol.



What is it?

A small tree with
shiny, sharp
leaves, and small
round, red fruit.



What is it?

A paper tube with small toys and candy inside, which is covered with bright paper and makes a short, sharp sound when both ends are pulled.





What is it?

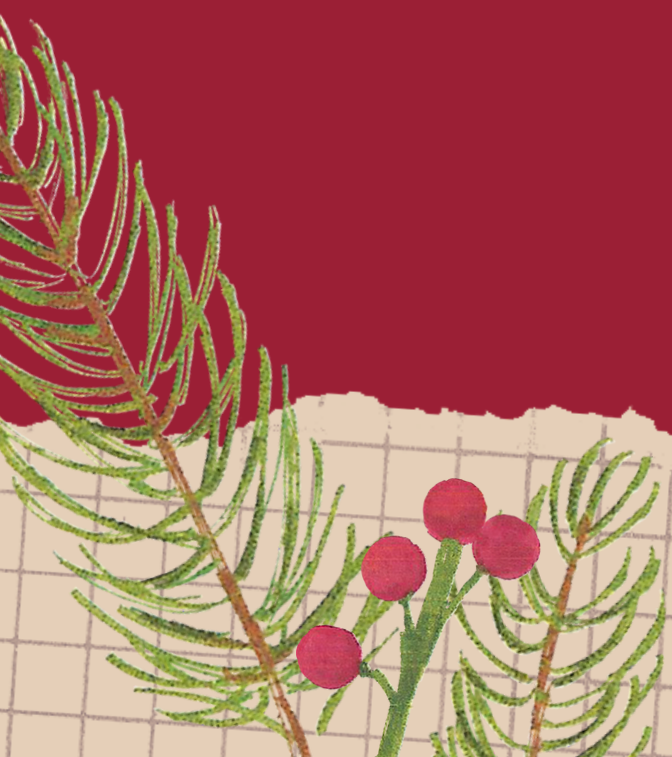
A type of sledge pulled by animals, for example, reindeer.





What is it?

A ball-shaped Christmas decoration for hanging on a tree.



What is it?

An arrangement
of flowers and
leaves in a circular
shape, used as a
decoration.



Part 2

WHY HAVE THE PEOPLE DECIDED TO GET THESE TREES?



Source: [mixcloud](#)

part 2

WHY HAVE THE PEOPLE
DECIDED TO GET THESE
TREES?



Source: [mix5.com](#)

WOULD YOU PREFER TO BUY A
REAL CHRISTMAS TREE OR AN
ARTIFICIAL ONE? WHY?

Part 2

HOW DOES THE WEATHER AFFECT THE CHRISTMAS ATMOSPHERE?



Source: [iStock](#)

Part 2

HOW DOES THE WEATHER AFFECT THE CHRISTMAS ATMOSPHERE?



Source: [iStock](#)

IS IT POSSIBLE TO ENJOY CHRISTMAS WITHOUT SNOW?

Part 3

I'd like you to imagine that you are going to prepare a Christmas party. Here are some ideas that you may want to include at your Christmas party

