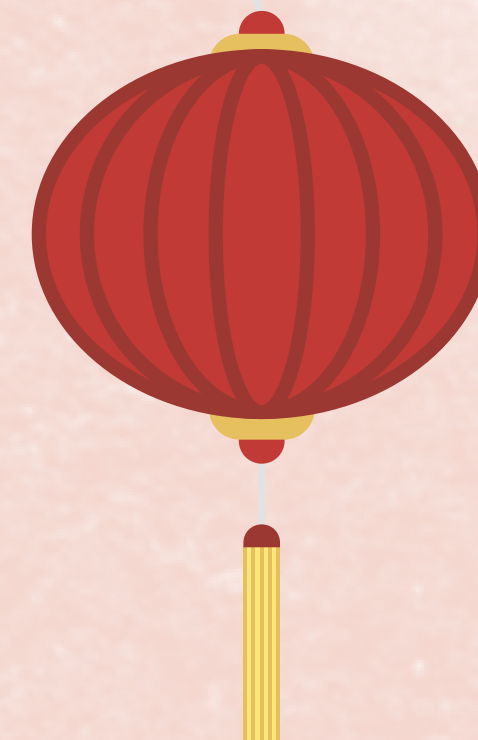


The background is a watercolor illustration with a torn paper effect. It features large, soft-edged washes of color: a warm yellow-orange on the left, a muted green on the right, and a light pink at the bottom. The central area is a white, torn piece of paper. The text "Happy New Year!" is written in a bold, black, cursive script across this white area. There are also small, dark brown spots scattered throughout the watercolor background, resembling ink splatters or paint droplets.

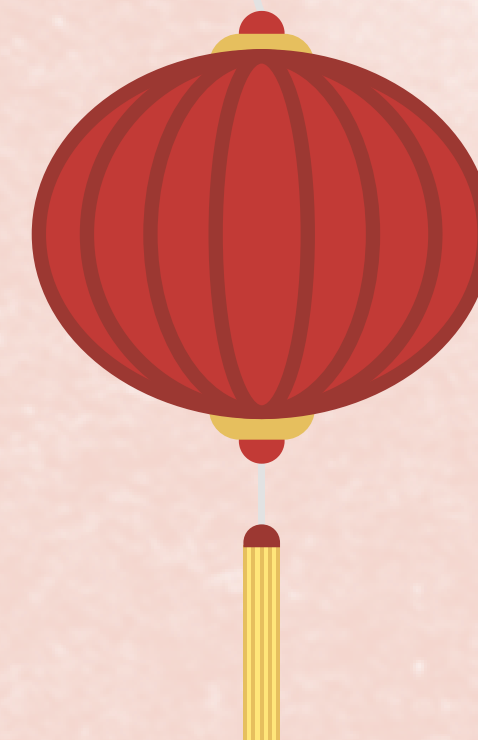
*Happy New Year!*





# *Happy New Year!*

..... February 2022



# *Happy New Year!*

1st February 2022

*When were you born?  
What is your Zodiac sign?*



Aries



Taurus



Gemini



Cancer



Leo



Virgo



Libra



Scorpio



Sagittarius



Capricorn



Aquarius

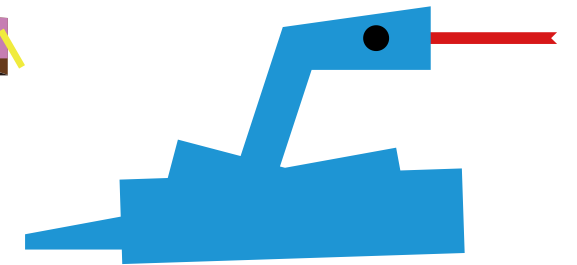
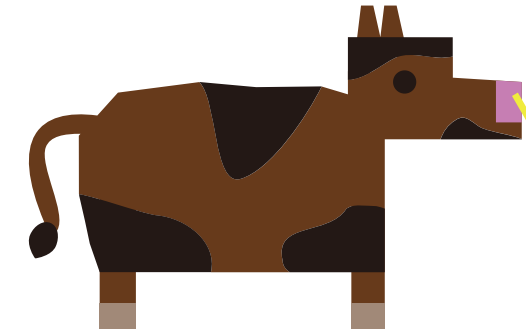
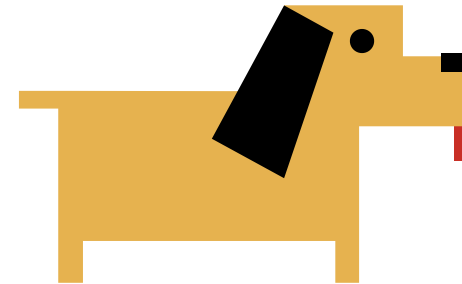
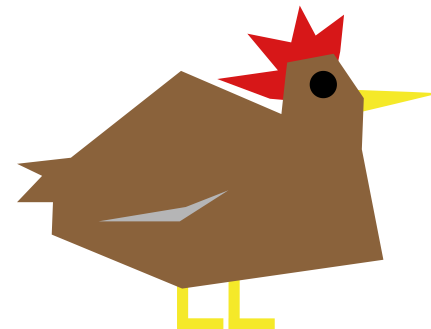
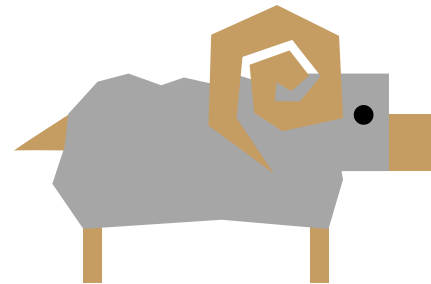
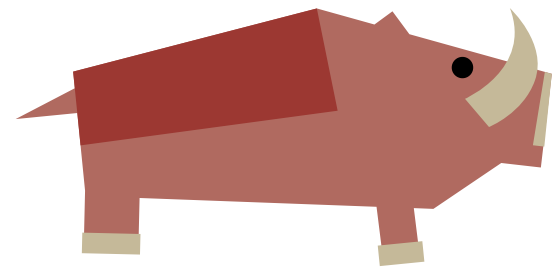
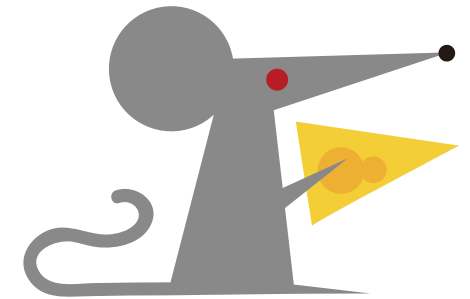
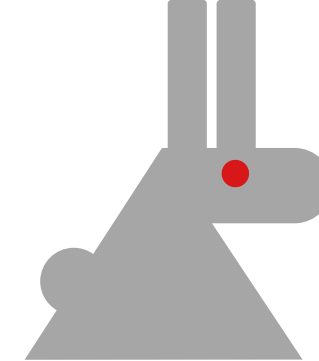
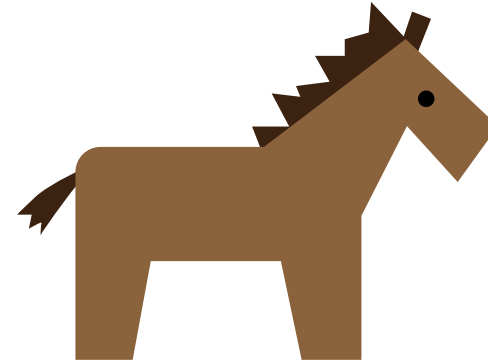
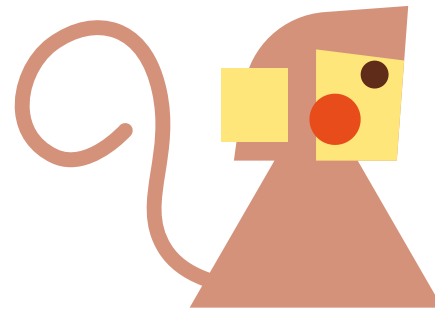


Pisces



# Chinese Zodiac

What do you call these animals in English?

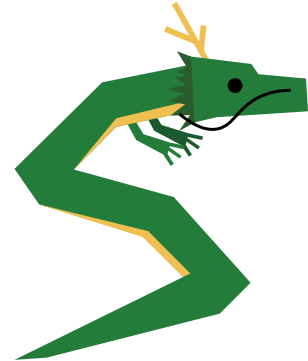




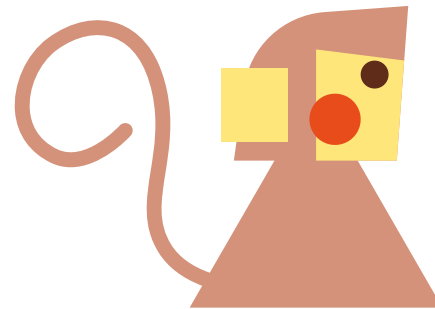
# Chinese Zodiac



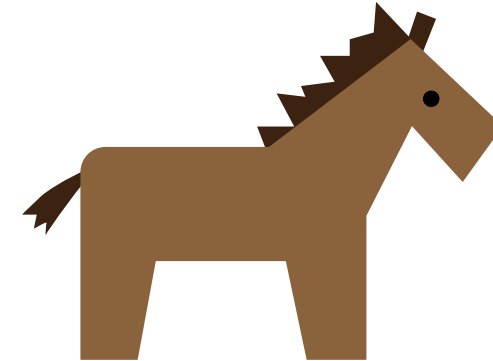
Tiger



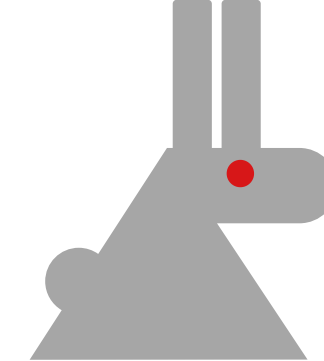
Dragon



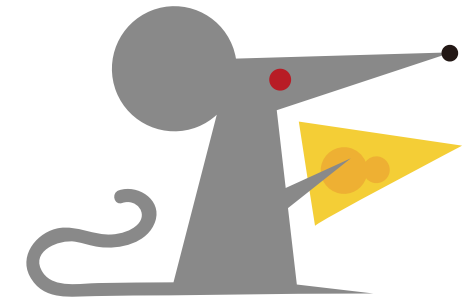
Monkey



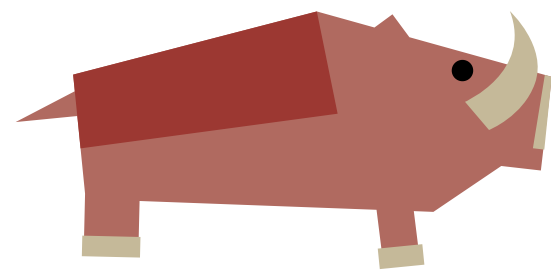
Horse



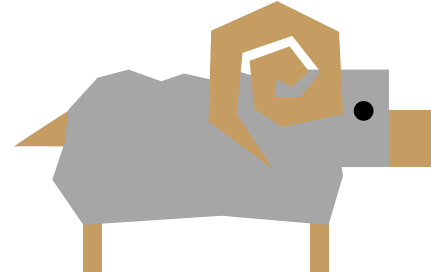
Rabbit



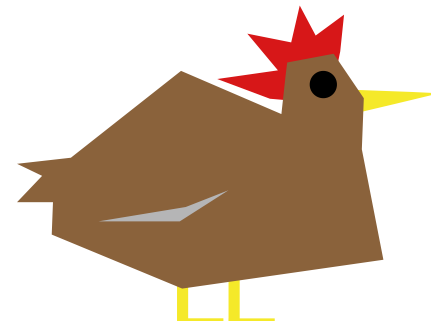
Rat



Pig



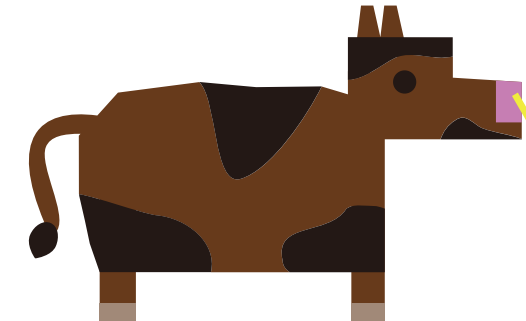
Sheep



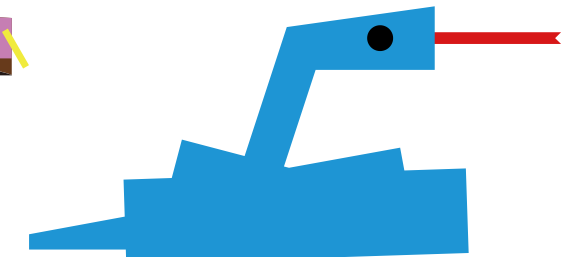
Rooster



Dog



Ox

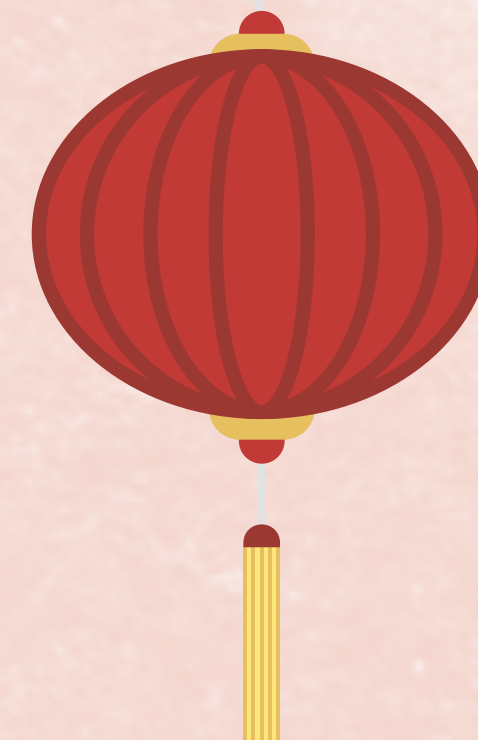


Snake



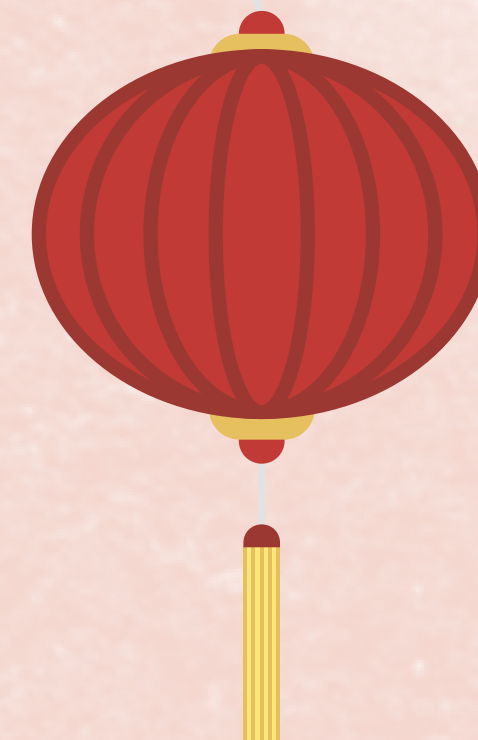


2022 - the year  
of the .....





2022 - the year  
of the Tiger

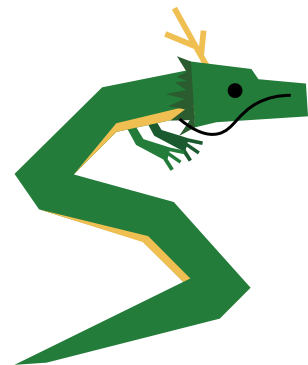




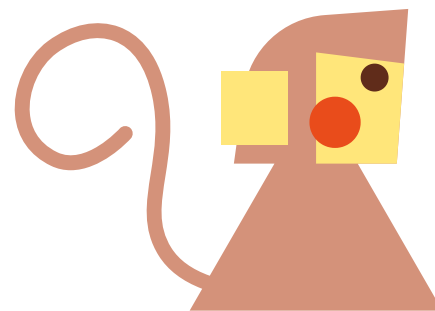
# *Predict the order of Chinese zodiac signs*



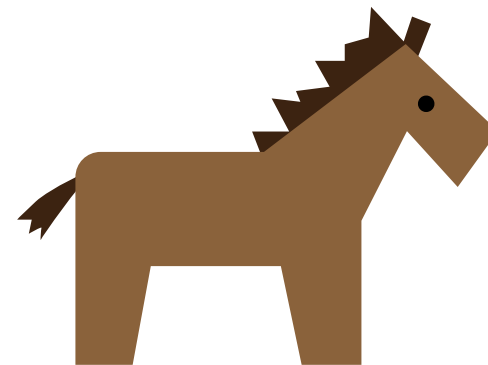
Tiger



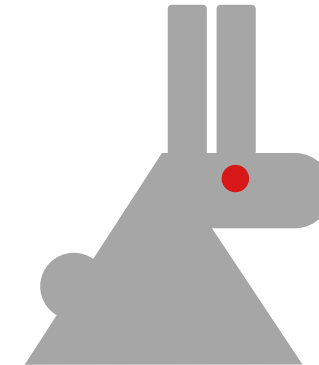
Dragon



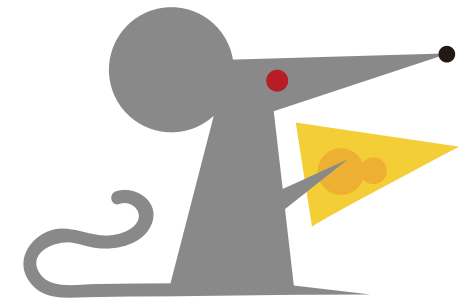
Monkey



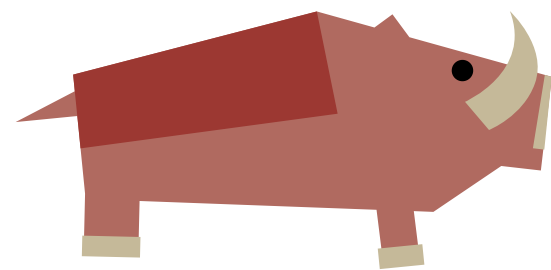
Horse



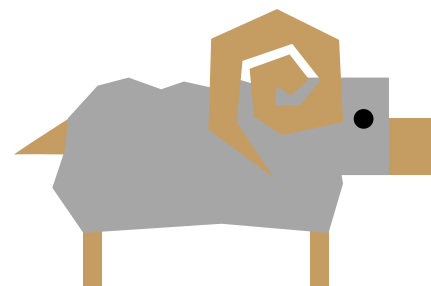
Rabbit



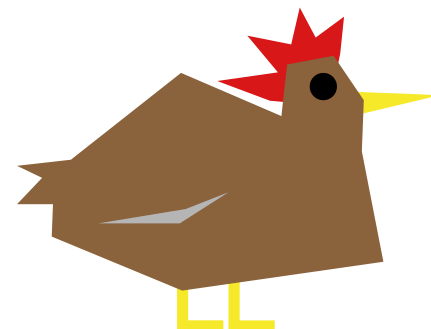
Rat



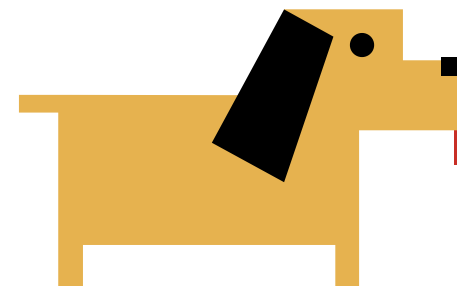
Pig



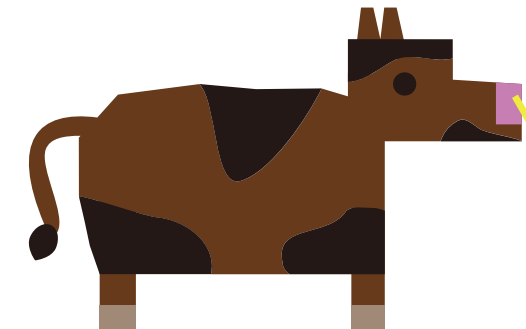
Sheep



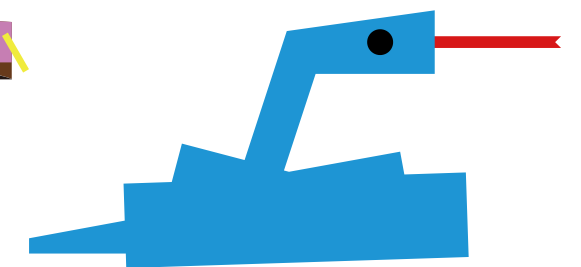
Rooster



Dog



Ox



Snake

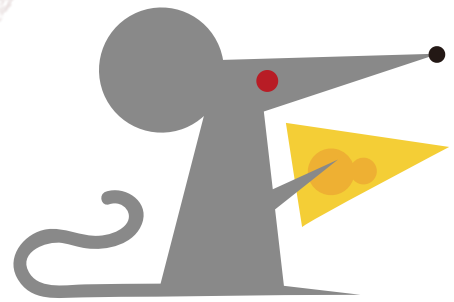


*Watch the video and  
check your answers*

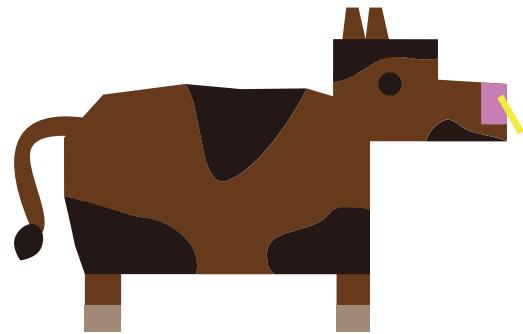
[The myth behind the Chinese zodiac](#)



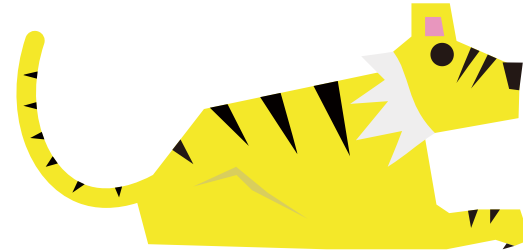
# *The order of the Chinese Zodiac*



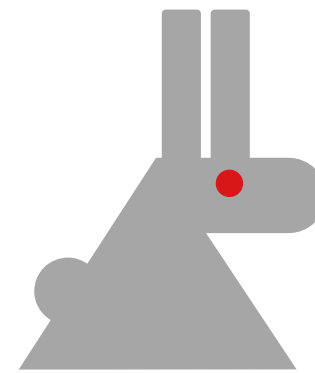
Rat



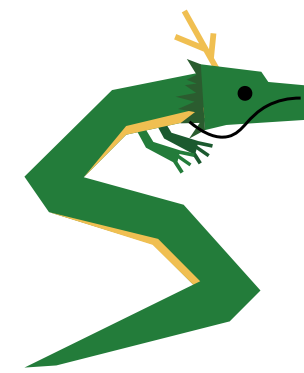
Ox



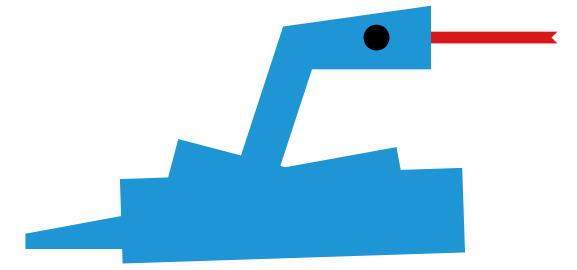
Tiger



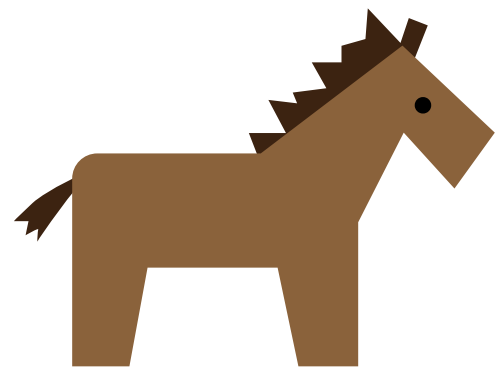
Rabbit



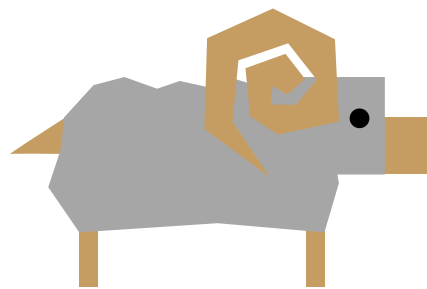
Dragon



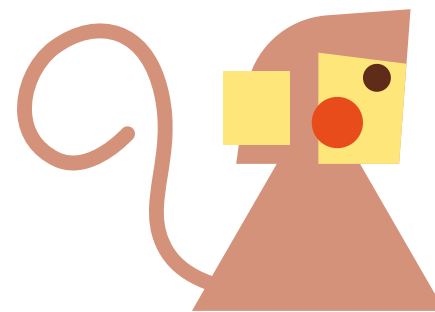
Snake



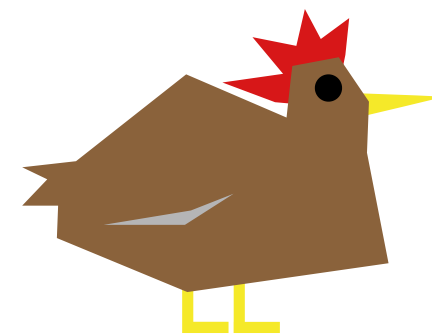
Horse



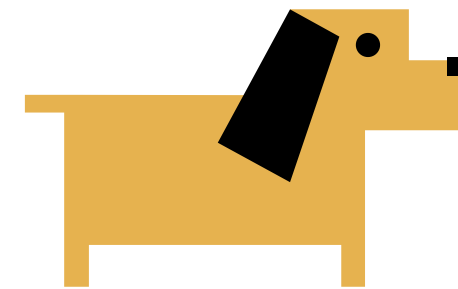
Sheep



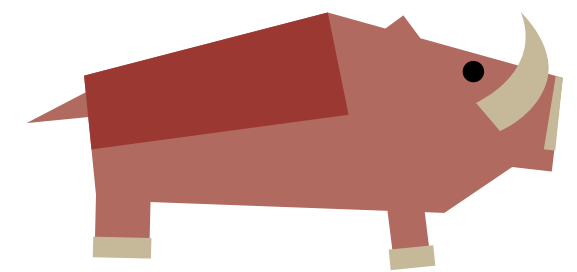
Monkey



Rooster



Dog



Pig



## *Watch the video again*

Answer the questions about the video

1.What are the five elements of the Chinese zodiac?

- a. Earth, Fire, Water, Wood, Metal
- b. Earth, Air, Fire, Water, Metal
- c. Wind, Water, Earth, Glass, Cloud
- d. Fire, Wind, Rain, Mud, Wood

2.Which of these animals is not represented in the Chinese zodiac?

- a. Dog
- b. Monkey
- c. Dragon
- d. Cat

3.How many different combinations of animals, elements and yin/yang are there total in the Chinese zodiac?

- a. 333
- b. 60
- c. 12
- d. 19

4.How did the emperor decide the order of the zodiac signs?

- a. By a vote from all citizens in the land
- b. By size
- c. By the order they finished the race
- d. By the ones he liked the most

5.Which animal is first in the cycle?

- a. Monkey
- b. Cat
- c. Dog
- d. Rat



## *Watch the video again*

Answer the questions about the video

1. What are the five elements of the Chinese zodiac?

- a. **Earth, Fire, Water, Wood, Metal**
- b. Earth, Air, Fire, Water, Metal
- c. Wind, Water, Earth, Glass, Cloud
- d. Fire, Wind, Rain, Mud, Wood

2. Which of these animals is not represented in the Chinese zodiac?

- a. Dog
- b. Monkey
- c. Dragon
- d. **Cat**

3. How many different combinations of animals, elements and yin/yang are there total in the Chinese zodiac?

- a. 333
- b. **60**
- c. 12
- d. 19

4. How did the emperor decide the order of the zodiac signs?

- a. By a vote from all citizens in the land
- b. By size
- c. **By the order they finished the race**
- d. By the ones he liked the most

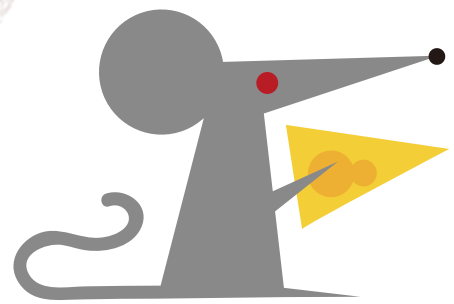
5. Which animal is first in the cycle?

- a. Monkey
- b. Cat
- c. Dog
- d. **Rat**

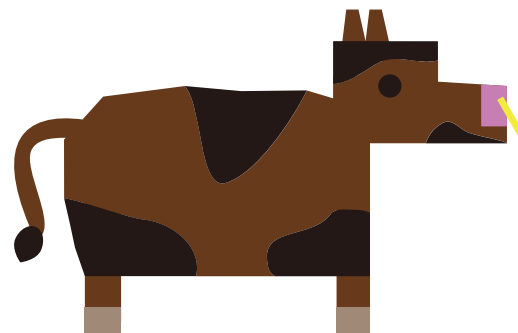


# What personality traits best describe each animal?

Do you think that the zodiac signs define our personalities?



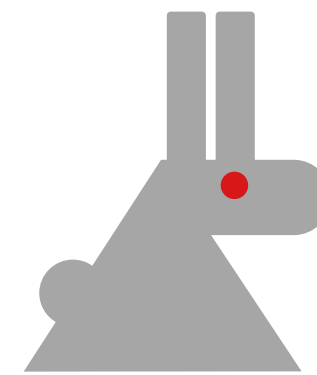
Rat



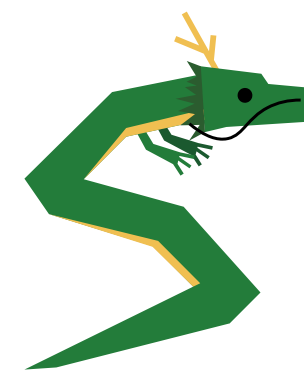
Ox



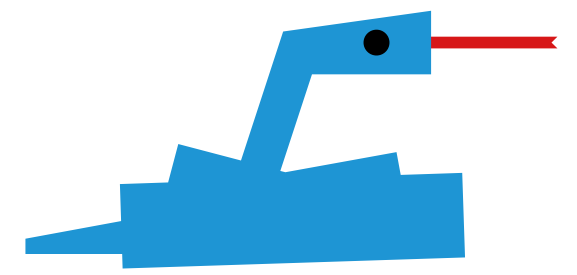
Tiger



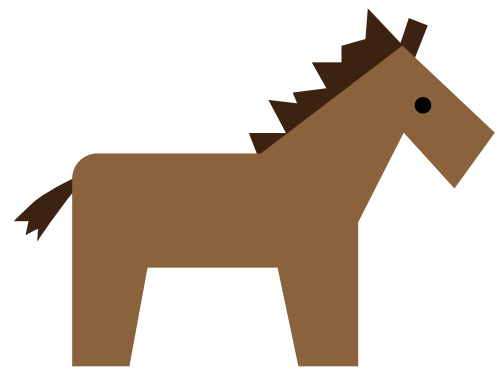
Rabbit



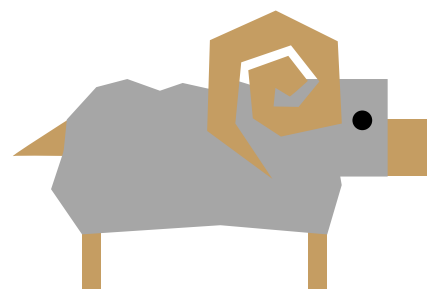
Dragon



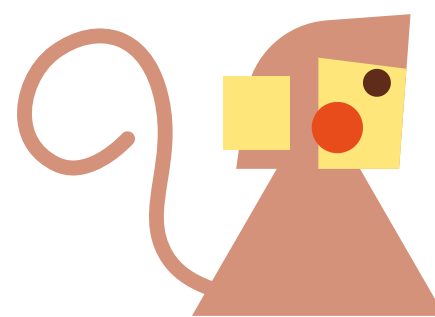
Snake



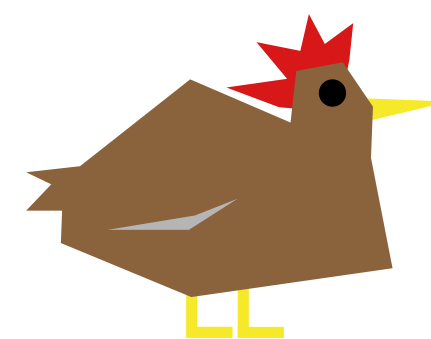
Horse



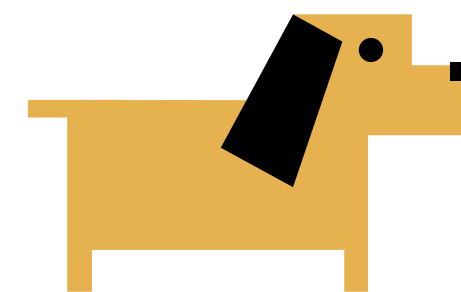
Sheep



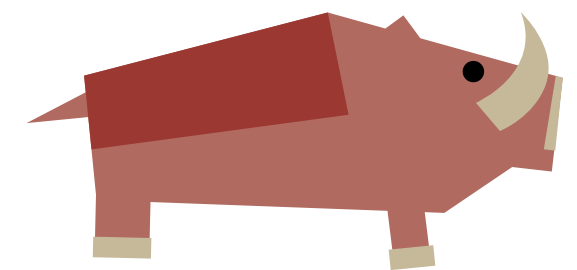
Monkey



Rooster



Dog



Pig



??	??	??	??	??	??
resourceful	strong	quick-witted	quiet	intelligent	mysterious
kind	determined	versatile	responsible	charismatic	wise
??	??	??	??	??	??
active	calm	smart	hard-working	sociable	compassionate
energetic	sympathetic	curious	courageous	honest	honest

*What character traits  
best describe YOU?*



rat	ox	tiger	rabbit	dragon	snake
resourceful	strong	quick-witted	quiet	intelligent	mysterious
kind	determined	versatile	responsible	charismatic	wise
horse	sheep	monkey	rooster	dog	pig
active	calm	smart	hard-working	sociable	compassionate
energetic	sympathetic	curious	courageous	honest	honest

*What character traits  
best describe YOU?*



# What is your Chinese zodiac?





rat	ox	tiger	rabbit	dragon	snake
resourceful	strong	quick-witted	quiet	intelligent	mysterious
kind	determined	versatile	responsible	charismatic	wise
horse	sheep	monkey	rooster	dog	pig
active	calm	smart	hard-working	sociable	compassionate
energetic	sympathetic	curious	courageous	honest	honest

*Do you agree with your  
personality traits?*